

# EXPLORER 540 LTE Modem

Turn your BGAN into a dual mode M2M terminal

April 2018 Product Sheet

The most important thing we build is trust

**COBHAM**



# EXPLORER 540 LTE Modem

Turn your BGAN into a dual mode M2M terminal

**COBHAM**

- Powerful LTE Modem designed for the EXPLORER 540 BGAN M2M
- Simply connect the LTE Modem on the back of the EXPLORER 540 via USB and use a local cellular network as an alternative to BGAN
- Automatic failover between BGAN and cellular networks
- Designed for harsh environments with IP66 and an extended temperature range.
- Highest throughput of up to 150 Mbps with LTE Cat. 4



## Features

LTE:	Up to 150 Mbps DL, 50 Mbps UL (Cat. 4) Channel Bandwidths: 1.4 - 20 Mhz MIMO 2x2
UMTS/DC-HSPA+:	Up to 42 Mbps downlink and up to 5.76 Mbps uplink
GSM:	GPRS & EDGE

Model	LTE module	Region	Access Technology		
			LTE Bands	UMTS Bands	GSM Bands
403715A-101	ublox TOBY-L200	North America	2,4*,5,7	850/900/1900/2100	850/900/1800/1900
403715A-102	ublox TOBY-L210	EUROPE / APAC	1,3*,5,7,8,20	850/900/1900/2100	850/900/1800/1900

\*Requires external housing

Antenna: Integrated cellular antenna

## Dimensions:

L/W/D: 85 / 85 / 40 mm  
Weight: 380g

## Environmental:

Operating Temperature: -40 to +85°C (extended range)  
Industrial Grade: Automotive  
Ingress Protection: IP66

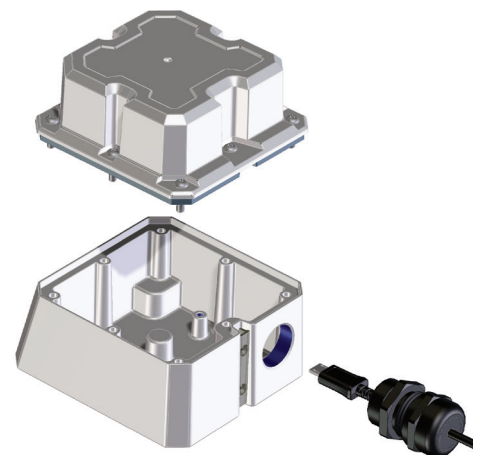
## BGAN firmware:

EXPLORER 540 version 1.02 or later

## Product numbers :

403715A-101: EXPLORER 540 LTE Modem (US)  
403715A-102: EXPLORER 540 LTE Modem (EMEA / APAC)  
403715A-110: LTE Modem Extension Kit  
- To mount the LTE Modem separate from EXPLORER 540

Cellular SIM Card Holder  
Micro USB Connector  
Short cable included



Optional LTE Modem Extension Kit  
for external housing

For further information please contact:

Cobham SATCOM  
Lundtoftegaardsvej 93 D  
DK-2800 Kgs. Lyngby  
Denmark  
Tel: +45 3955 8800  
Fax: +45 3955 8888